

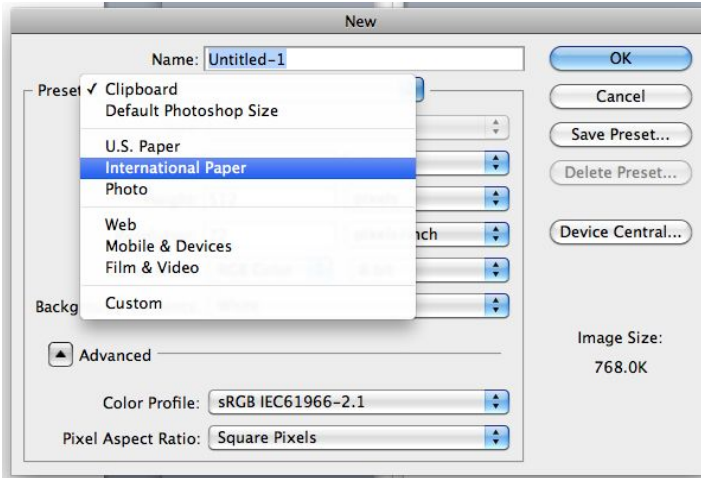
# Designing a poster Photoshop tutorial

1 Select the Photoshop icon



2 Select FILE then NEW

3



Select **INTERNATIONAL PAPER**  
Then **A4**



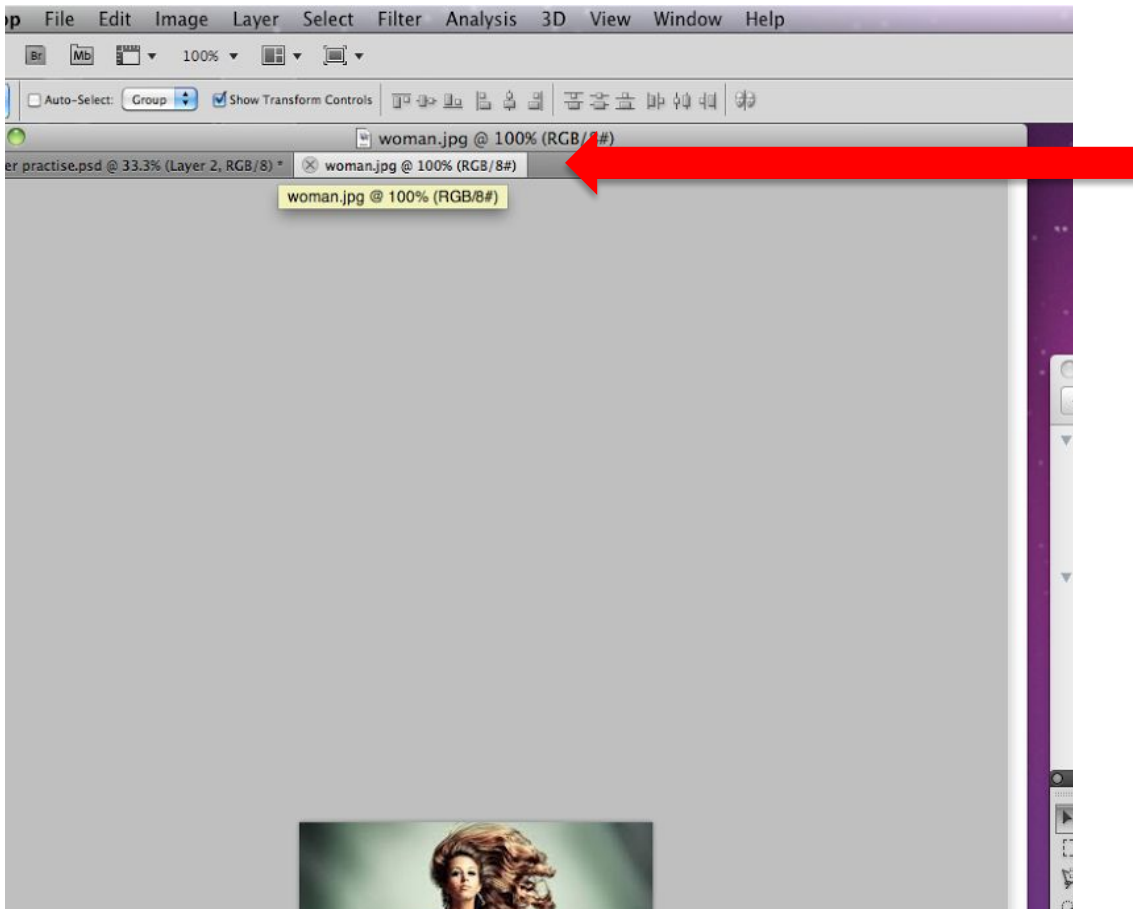
Landscape = width 297  
height 210



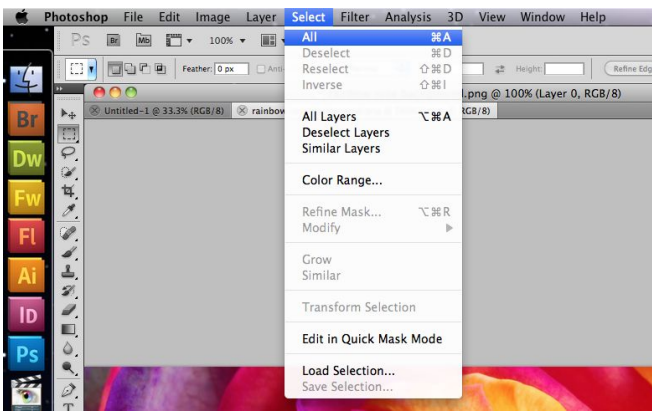
Portrait = width 210  
height 297

Select **OK**

4 Select **FILE** then **OPEN** and find your background picture.  
It will now open in a new tab and NOT on your page.



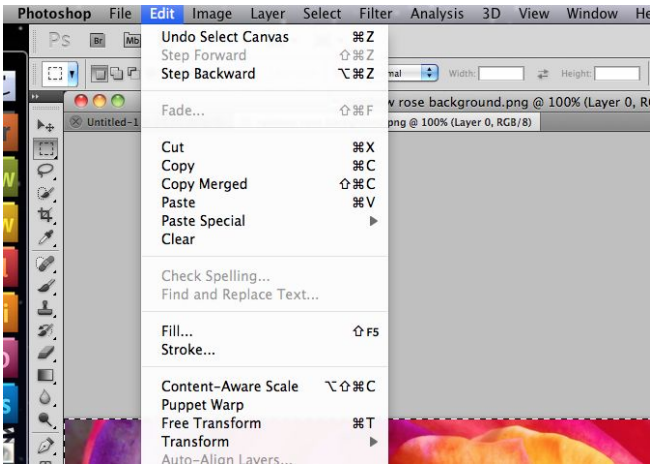
5



Make sure you are in the new tab with the picture on.  
Go to **SELECT** in the bar at the top and press **ALL**. You will now see a flashing line around the image.



6

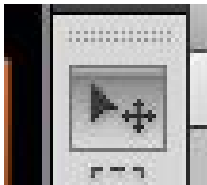


Go to **EDIT** and click **COPY**.

Go to your new page tab and go to **EDIT** and click **PASTE**

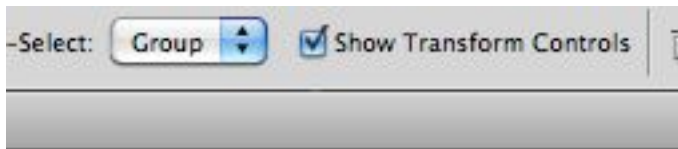
Now you might need to resize your picture on to the background to make it bigger or smaller

7



Press the **SELECT** icon

8



Tick the box at the top that says **SHOW TRANSFORM CONTROLS** so that you can make the picture bigger or smaller

9



Hold your finger down on the **shift key** as you stretch the corner. This stops the image distorting.

10



When you are happy with the size, press the **TICK** at the top of the screen.

## Cutting an image out

11 You may now want to put an image over the top of your background. This will probably need cutting out.

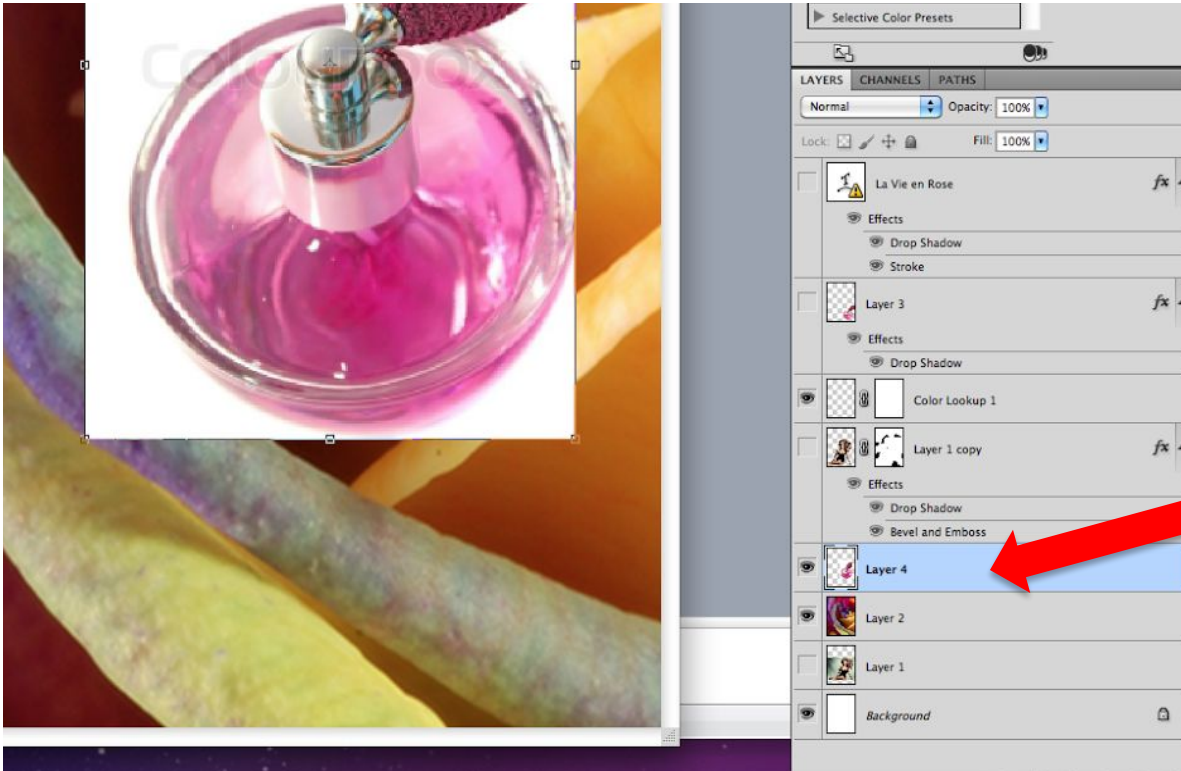
Follow stages 4 to 10 to import your new image onto your background image.



Background image

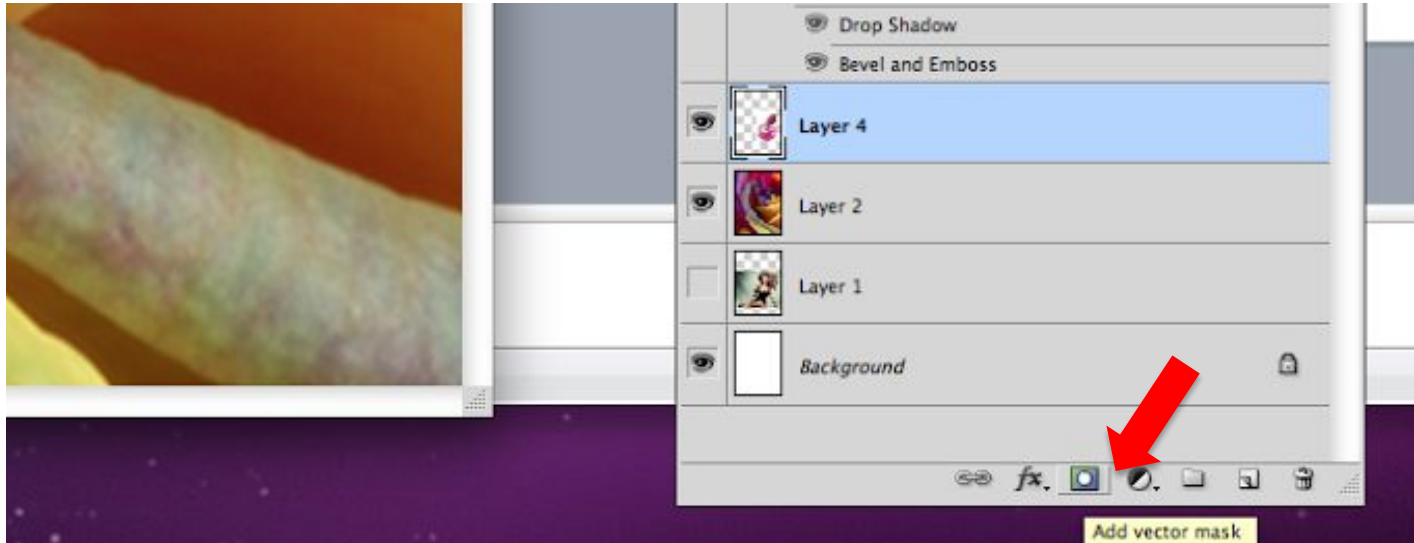
Image to be cut out

12 Make sure that you have selected the layer that you want to cut out.



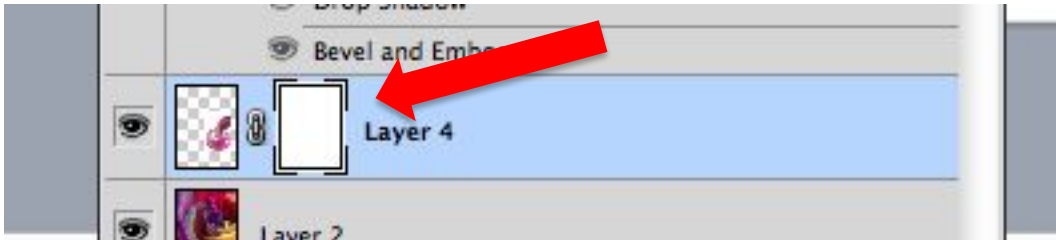
13

Click on the **add vector mask** icon



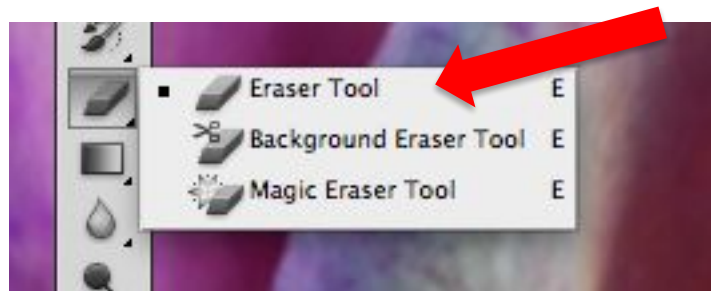
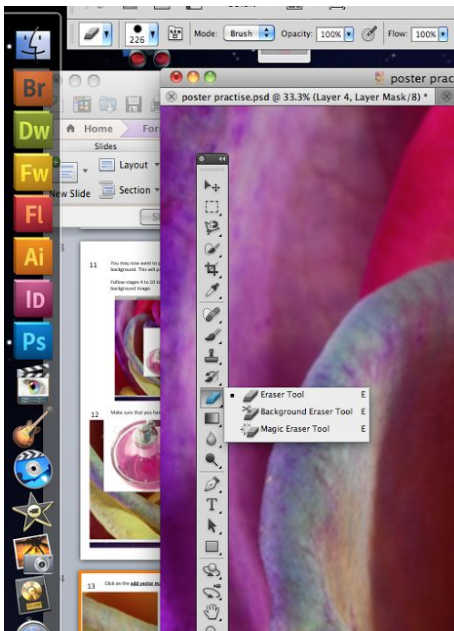
A protective layer will now be placed over your image. This means that if you make a mistake when cutting it out, you can fix it.

Your layer should look like this, with a frame around the white rectangle next to your picture.



14 Now you can select the eraser tool from the tool bar on the left.

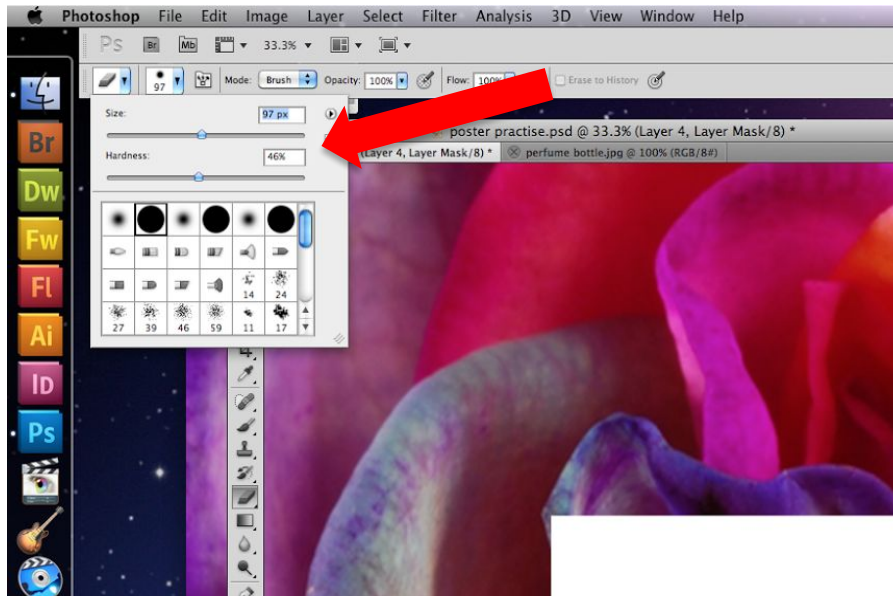
This will allow you to rub out the parts that you don't want.



# 15

At the top of the screen, you can now change the size and the 'hardness' of the rubber using the sliding bar.

Changing the hardness makes the rubber work very softly to create a fuzzy effect or very hard to make a defined line when you rub out the image.



# 16



Make sure that the white square in the tool bar is on top of the black square.



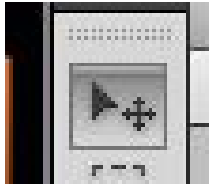
**White square on top = rub out the image.**



**Black square on top = repair the image.**



17

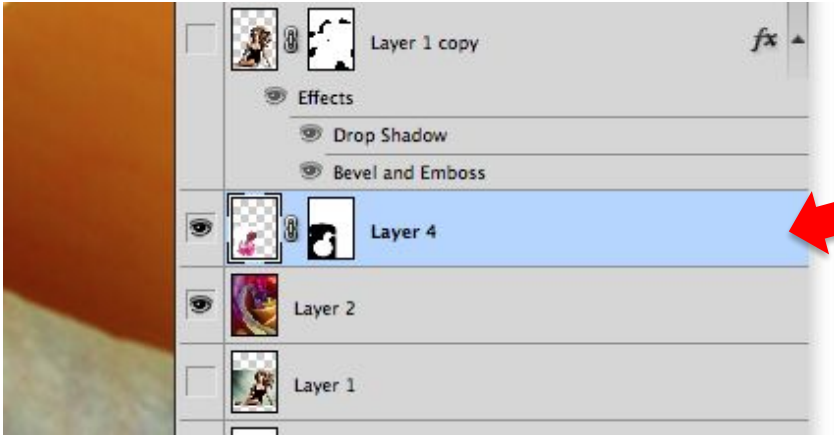


When you have finished cutting the picture out, use the select tool to position your image on the poster.

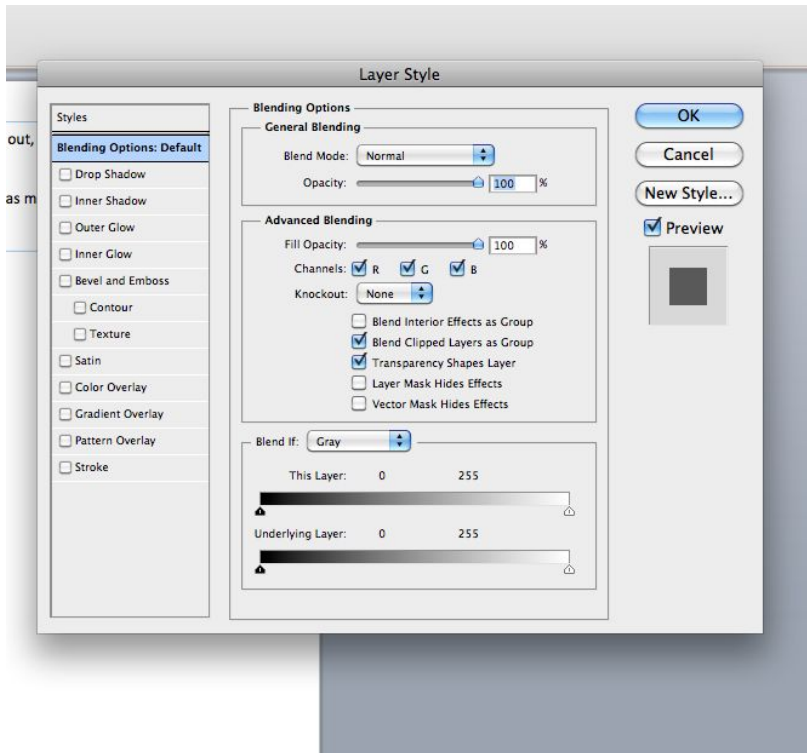
You can keep repeating this process to add as many images as you need to your poster.

### Adding effects

18 You can add shadows and effects to your image by double clicking the layer



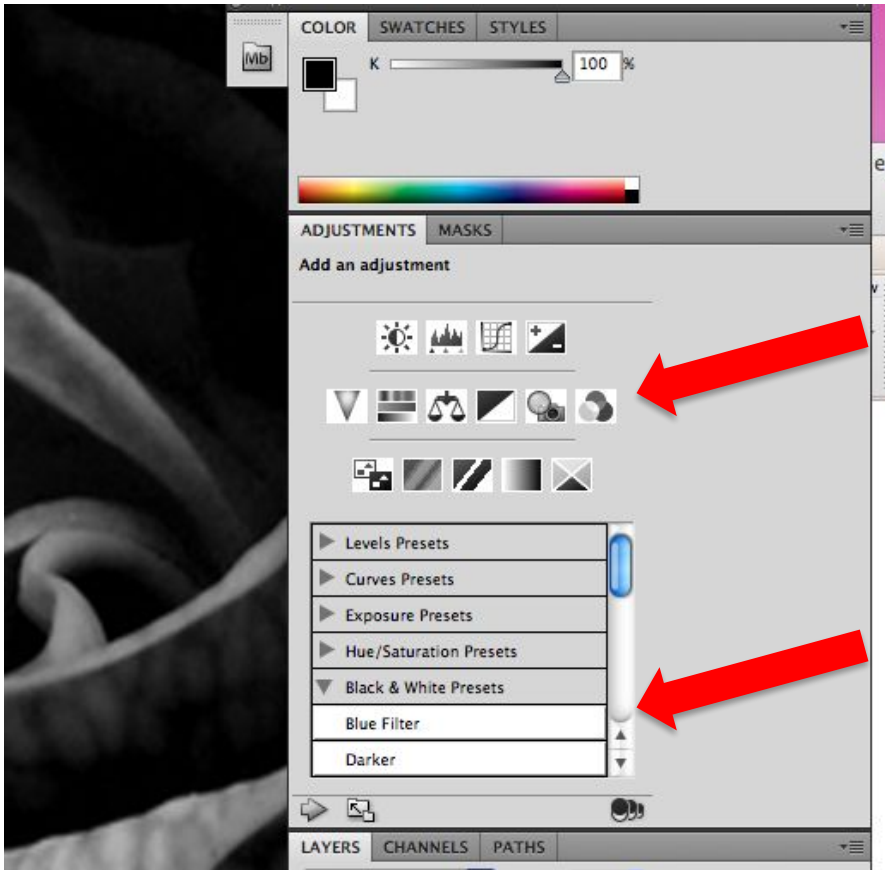
A box will pop up:



Experiment with effects by changing some of the settings.

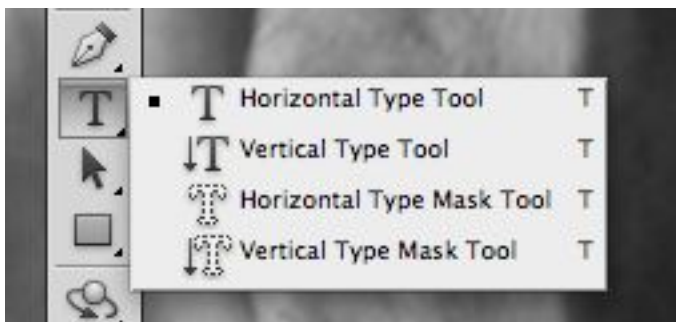
To remove them, un tick the boxes on the left.

19 You can change the colours and vibrancy by adjusting the levels in this box:



### Adding text

20 You can add text to your image by clicking on the **text icon**



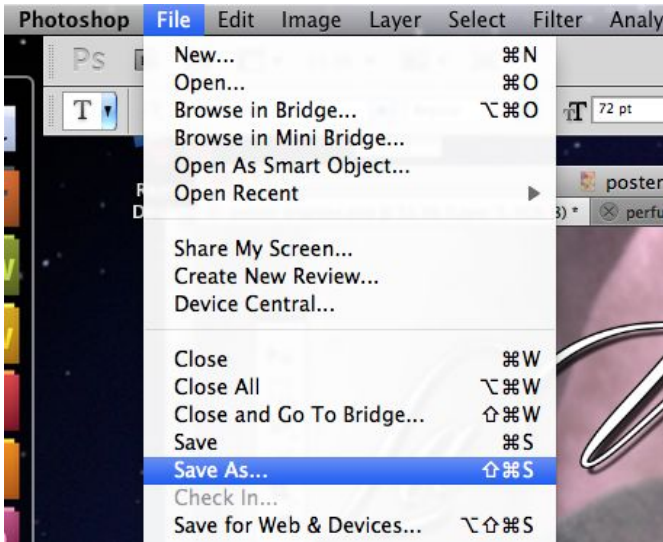
The text works in the same way as Word or Powerpoint.

Select your font, size and colour at the top of the screen.

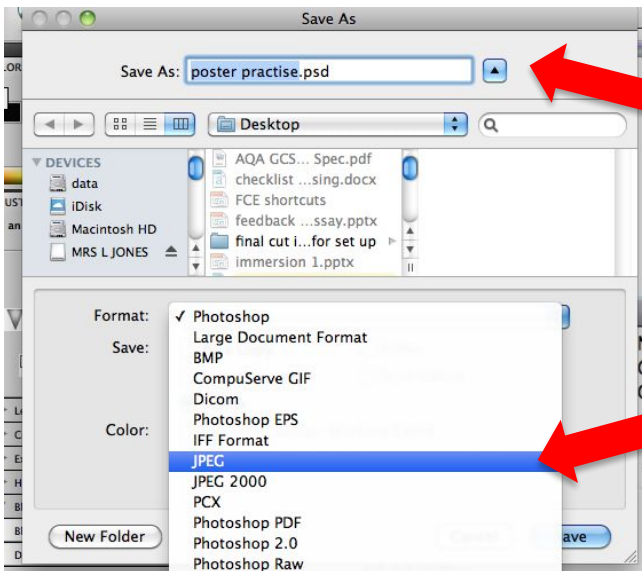
You can add shadows and effects by repeating step 18 with your text layer.

## Saving as a poster ready to print.

21

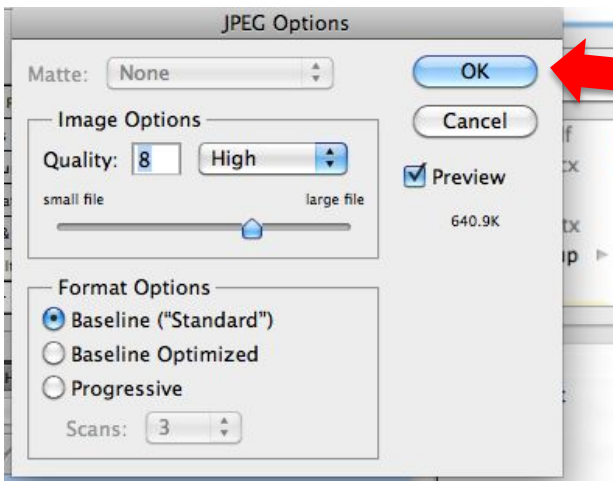


Select **FILE** then **SAVE AS**



Give it a name

Select **FORMAT** then **JPEG**



Select **OK**